



Access Steel Tech

Steel Structures



Steel Tech



Associate Member
1096944

AN ITES Steel Structural Company

Access Steel Tech



Access Steel Tech, a leading ITES Civil Engineering company in India, is a part of " Access Group", a leading ER&D Technology & Services company. We build strategic partnerships with clients & provide solutions to companies where Structural Engineering is a critical part of their corporate design strategy. We also assist our clients in expanding their business through the Power of Information & Technology.

EXPERTISE

We offers Steel Structural & E R&D Services to companies across the World. The center in Nashik & Mumbai blends state of art computing facilities with creative resources. The center is home to large pool of multi-faceted professionals, drawn from diverse domains.

We are committed to continuous training and skill enhancement of our employees to provide the best technology value solutions to our clients.



BUSINESS MODEL

We are well aware that in our industry 99% is not good enough, perfection goes un noticed and that 1% error is visible and embarrassing. We here at Access Steel Tech make every visible effort to achieve perfection in every job. Access Steel Tech has been working with various clients on 3 types of business models.

- Fixed Bid Model
- Fixed Team Model
- Hourly Rates

TEAM

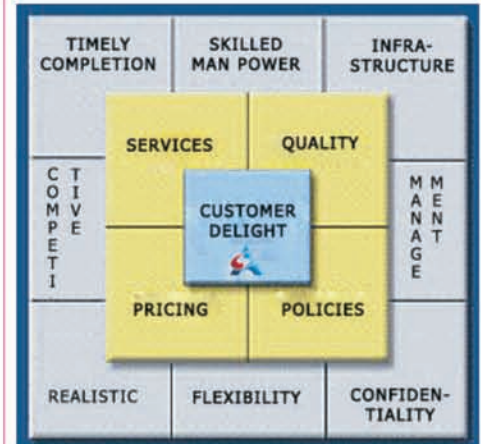
Access Steel Tech Management team is a group of qualified & talented individuals with over 20 years of experience in their individual fields. We are constantly learning and taking up new challenges.

Our top management inspires the rest of the company to create innovative solutions, deliver high quality results and foster strong client relationships.

We share a wealth of experience and broad skill set having served companies from Local, State & Federal Agencies

- Steel Fabricating Companies,
- Structural Steel Detailing
- Engineering Firms
- Government Departments
- Power Plants
- Oil & Gas Refineries
- Shipping Companies
- Defense Organization etc.

QUALITY POLICY



- We Strive For Excellence To Meet The Demands Of Our Customers
- Unmatched Turnaround Times
- Superb Accuracy
- Competitive Rates
- Online Project Management Tools

Business Associates

Steel Tech Engineering
www.steeltechengg.com

FlexiTech
www.flexitech.com



Our Capabilities



Access is a comprehensive structural steel detailing services company established by steel detailing professionals with more than 20 years' experience.

Steel Detailing

Access Business model focus on developing your structure with precision and quickness using intelligent resources such as Tekla structures, AutoCAD & SDS/2

- Structural steel detailing
- Miscellaneous steel detailing
- Shop/Fabrication drawings
- Connection sketches
- DXF files for plate work
- Customized reports
- Field/Shop bolt lists
- BIM Coordination.
- Miscellaneous steel detailing
- 3D Modeling
- Shop/Fabrication drawings
- CNC files for cutting/drilling
- Other Trades like Joists, Deck,
- Precast, Grating Etc. Coordination

500+
Projects

88+
Detailers

10000+
**Tone Detailing
Done**

Connection Design

We provide complete connection design services to Fabricators. Our specialized team uses design, fabrication and erection experience to develop and deliver structurally efficient connections

- Connection drawings
- Designs per LRFD, ASD standards
- Detailed sketches
- PDF/Word/Excell Output
- PE Stamping for all 50 States

BIM & Pre Construction Modelling

Access provides pre-detailing model and BIM services. We use Tekla BIMsight for construction Project Collaboration through which entire construction workflow can combine their models, check for clashes and share information. to deliver superior outcomes by compressing the schedule, reducing wastage and mitigating risk.



Industries Worked with



COMPLEX COMMERCIAL BUILDINGS



SCHOOLS & MEDICAL CENTRES



MALLS



STADIUMS



HIGH RISE BUILDINGS



AUDITORIUMS



INDUSTRIAL/PIPE CONVEYORS



DUCT WORKS



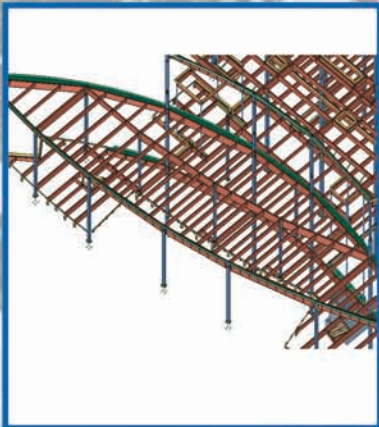
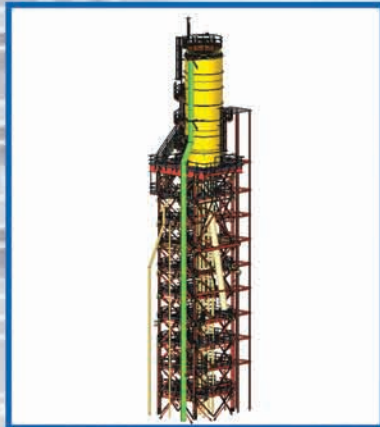
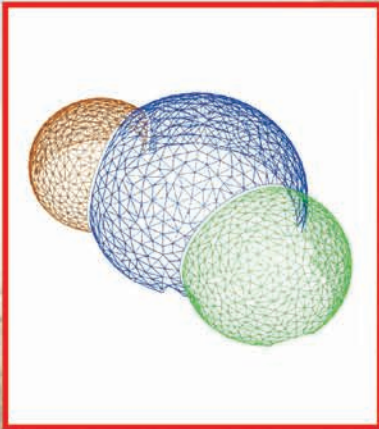
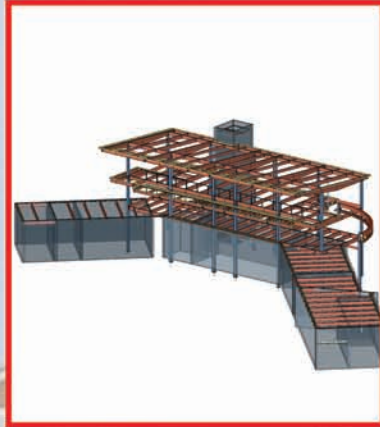
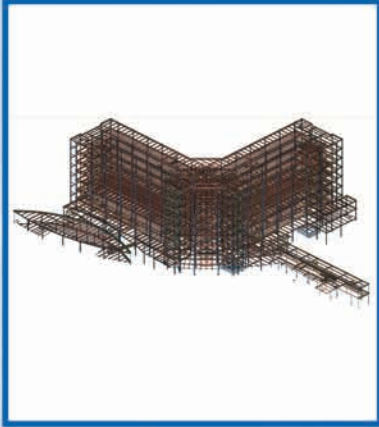
ORNAMENTAL STEEL



AIR/SEA PORT TERMINALS



Our Projects

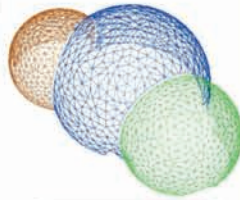


Our Projects

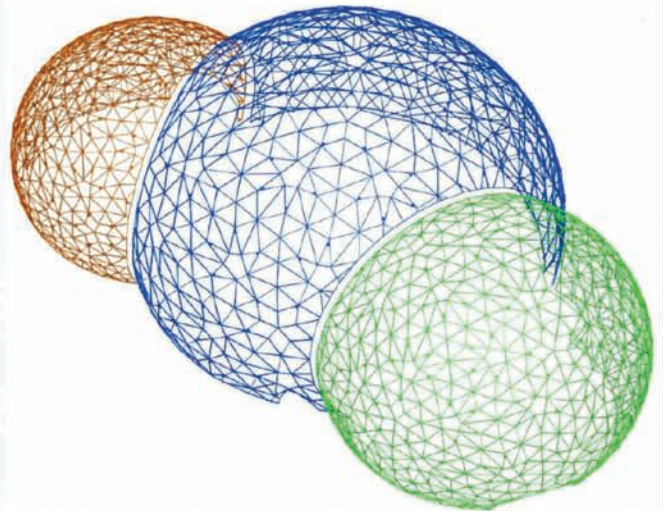
Amazon Rufus Sphere at Seattle -USA

Project:- Amazon Rufus Sphere at 2101 7th Avenue Seattle USA,
 Fabricator :-Truss Works International Inc.,
 Tonnage:- 163MT, Duration:- 22 Months.

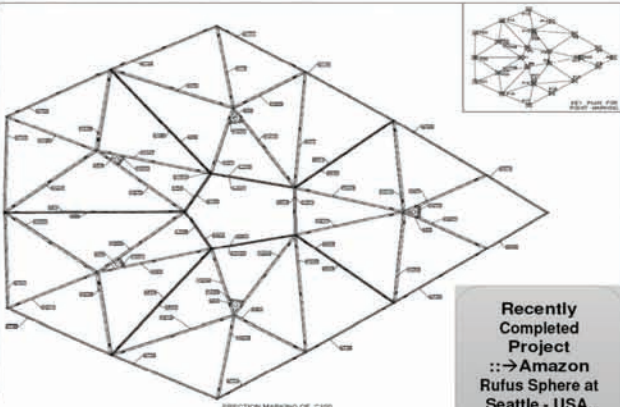
Project: Amazon Rufus Sphere at 2101, 7th Avenue Seattle,
 USA Fabricator: Truss Works International Inc., Tonnage: 163 MT
 Schedule: 2 Months, Input - 3D DWG Files



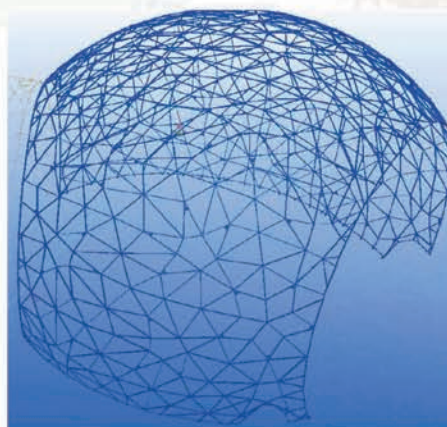
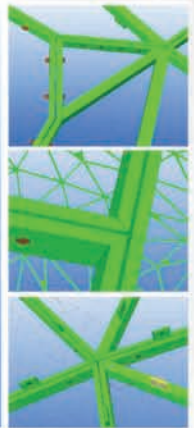
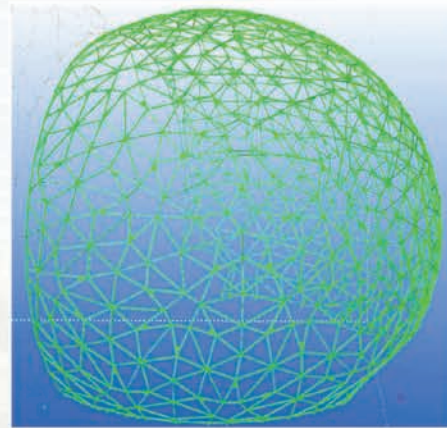
SteelTech Scope
 Erection Drawings,
 Assembly Drawings
 Single Part Drawings
 NC Files, KISS Files
 Coordination &
 Communication Tools
 Tekla BIMSight For 3D
 Model exchange &
 Solibri Model Checker



| XYZ COORDINATES FOR POINTS | | | |
|----------------------------|------------|------------|-----------|
| Name | X | Y | Z |
| P1 | 0.00 | 0.00 | 4.00 |
| P2 | 11.1152 | 2.015198 | 4.00 |
| P3 | 0.00 | 2.015198 | 4.00 |
| P4 | 0.00 | -2.015198 | 4.00 |
| P5 | 11.1152 | -2.015198 | 4.00 |
| P6 | 19.461318 | 0.015198 | 2.3348 |
| P7 | 22.015198 | 2.481318 | -1.015198 |
| P8 | 27.015198 | 0.00 | 1.015198 |
| P9 | 22.015198 | -2.481318 | -1.015198 |
| P10 | 19.461318 | -0.015198 | 2.3348 |
| P11 | 10.015198 | 0.00 | 3.015198 |
| P12 | 0.00 | 12.015198 | 2.00 |
| P13 | 2.481318 | 17.015198 | 0.015198 |
| P14 | 0.015198 | 12.015198 | 2.481318 |
| P15 | 2.7148 | 0.015198 | 3.015198 |
| P16 | 0.015198 | 12.015198 | 11.115198 |
| P17 | 2.481318 | -17.015198 | 0.015198 |
| P18 | 0.015198 | -12.015198 | 2.481318 |
| P19 | 2.7148 | -0.015198 | 3.015198 |
| P20 | -12.015198 | 12.015198 | 11.115198 |
| P21 | -13.015198 | -0.015198 | 1.015198 |
| P22 | -0.015198 | -2.7148 | 2.115198 |
| P23 | -17.015198 | 0.015198 | 3.015198 |
| P24 | -0.015198 | 2.7148 | 2.115198 |
| P25 | 17.015198 | 0.00 | 2.481318 |
| P26 | 0.015198 | 0.015198 | 3.00 |
| P27 | 0.015198 | -0.015198 | 3.00 |
| P28 | -0.015198 | -0.015198 | 2.101318 |
| P29 | -0.015198 | 0.015198 | 2.101318 |



Recently Completed Project
 ::→ Amazon Rufus Sphere at Seattle - USA.



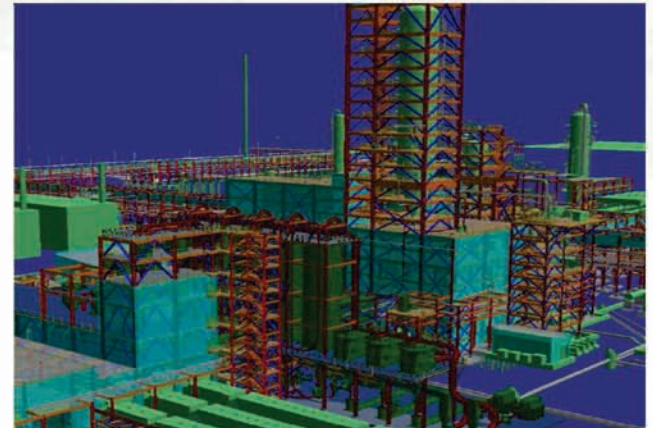
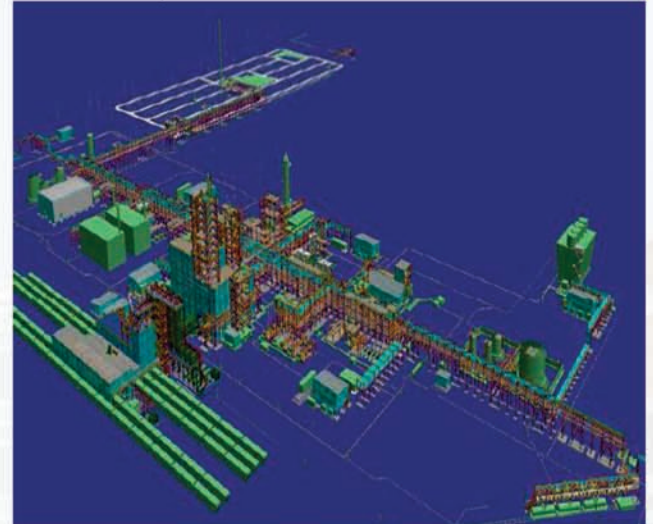
Our Projects



NOVA CHEM: AST2

Project Site: Sarnia-Ontario-Canada.
Owner: NOVA Chemicals General contractor TECNICAS: REUNIDAS
Fabricator Name: ANJ Industrial Fabricating Ltd.

Project Name: NOVA AST2.Ontario
Project Type: Industrial Structures
Tonnage: 5,000T
Project Duration: 12 Months

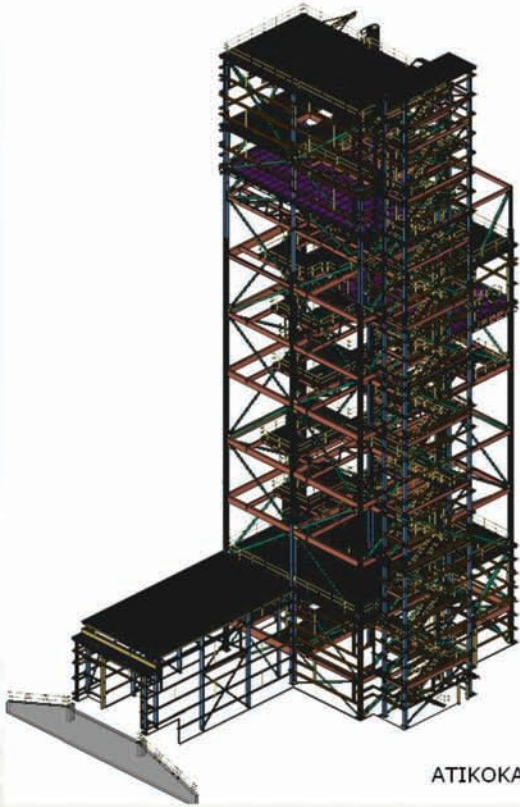


Our Projects

ATIKOKAN BTOMASS.ONTARIO

Project Atikokan Btomass Ontario
Fabricator Name: ANJ industrial fabricating ltd.
Project Type: Industrial

Tonnage: 500T
Project Duration: 8 Months



ATIKOKAN



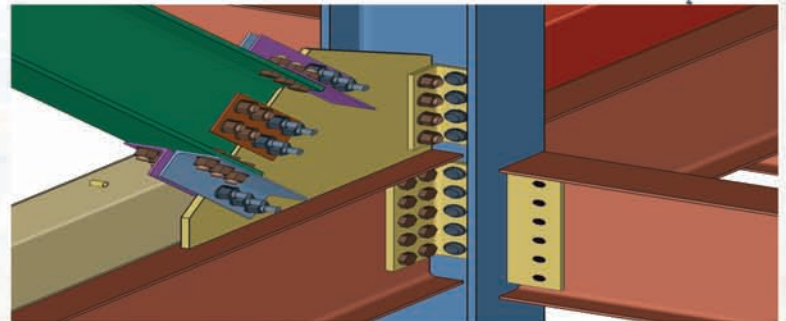
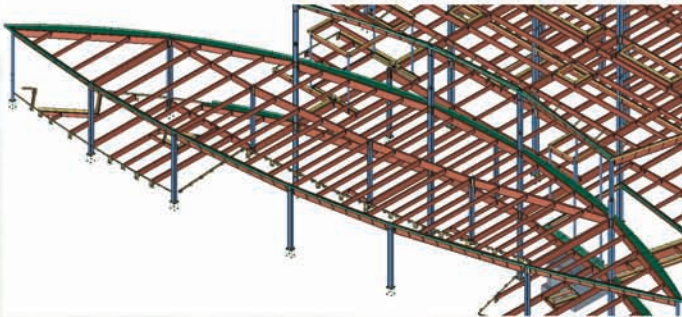
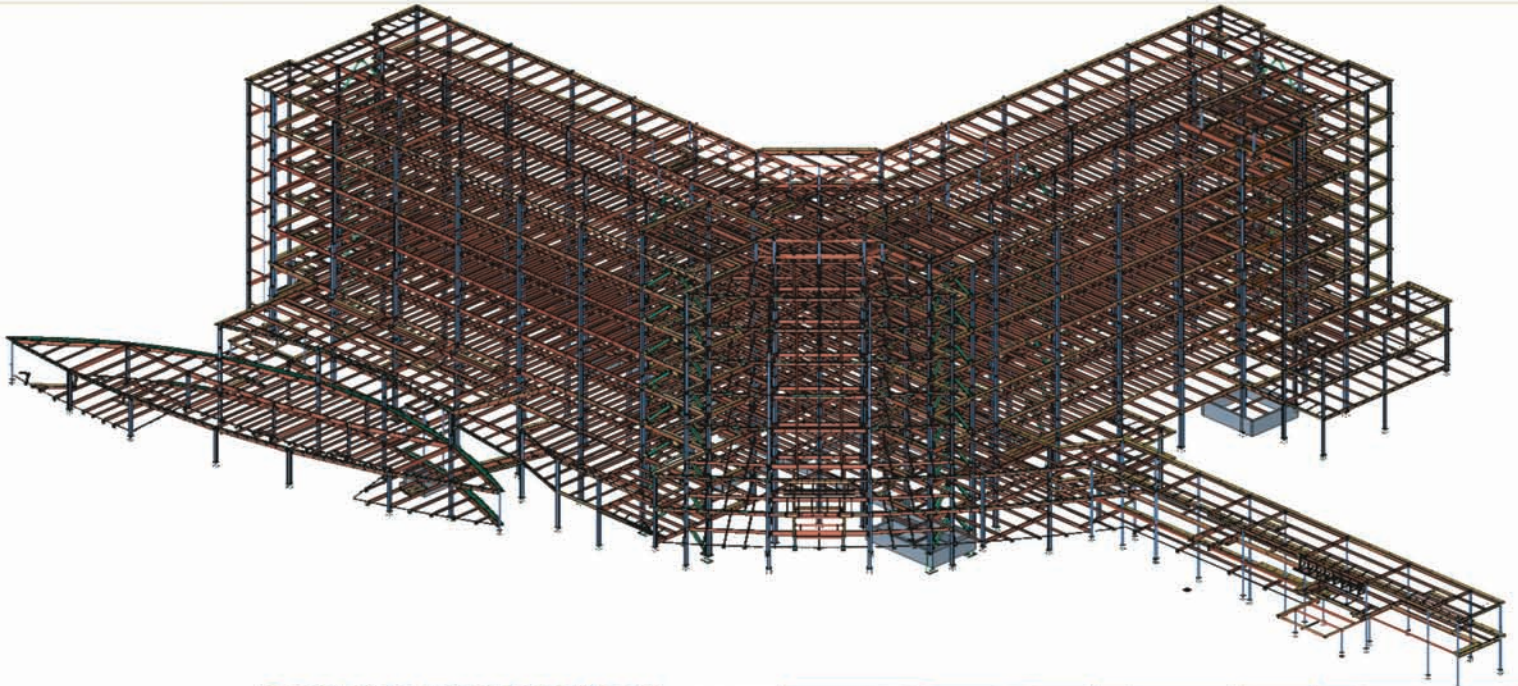
Our Projects



CENTRAL BAPTIST HOSPITAL . IN

About Project Central Baptist Hospital-New Albany, Indiana-Geiger & Peters
Owners Name: Paediatric Physical Therapy Association
Fabricator Name: GP-Geiger & Peters

Project Type: Hospital
Tonnage: 3000T
Project Duration: 8 Months

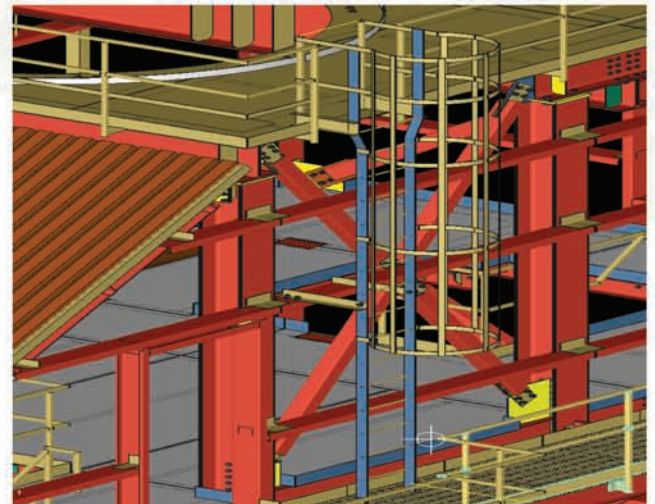
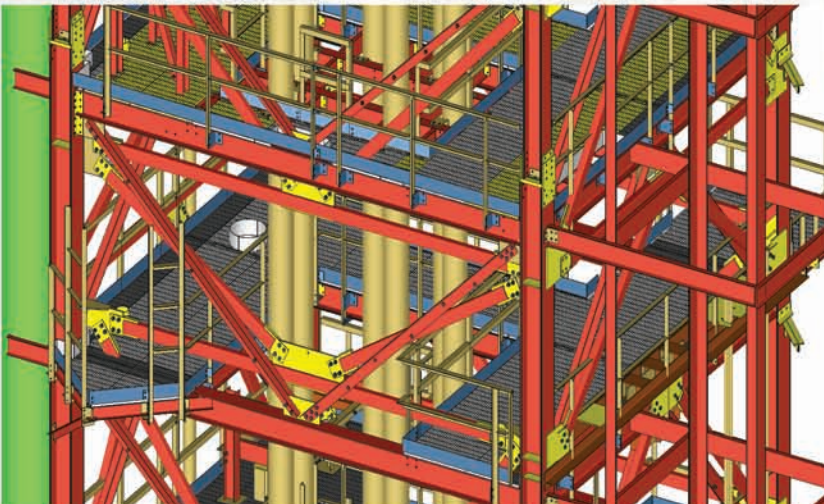
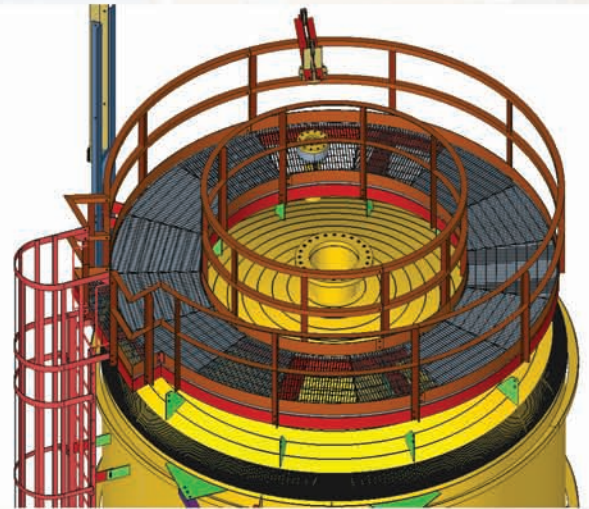
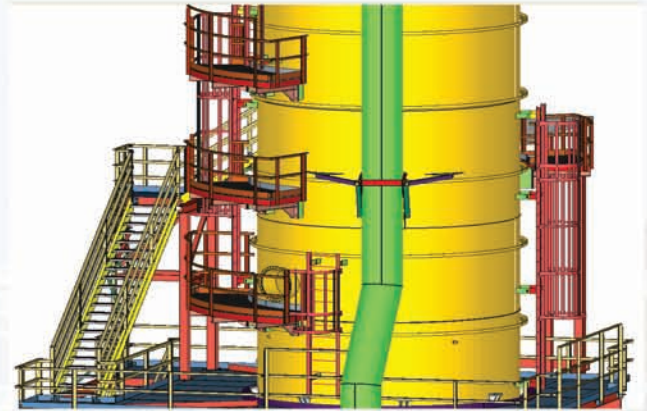


Our Projects

HCC TOWER-SUNCOR . ON

Project: Hcc Tower-Suncor
Owner Name: SUNCOR
Fabricator Name: ANJ industrial fabricating ltd. SARNIA

Project Type: Industrial
Project Duration: 4 Months



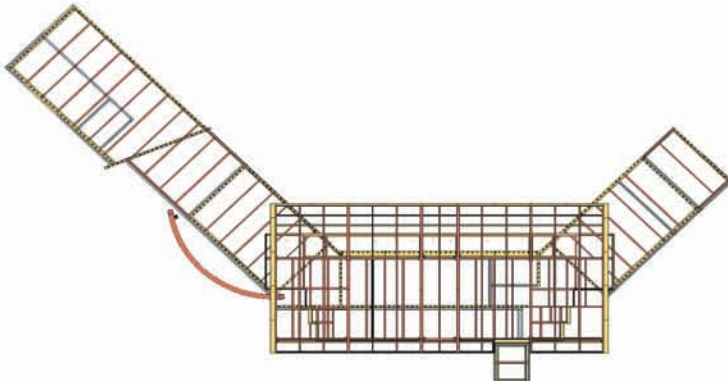
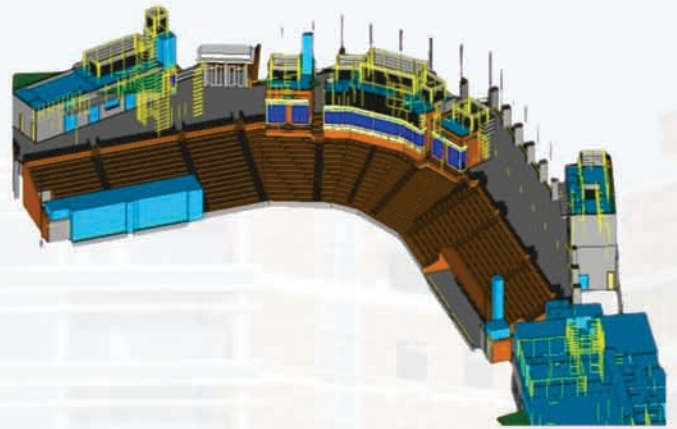
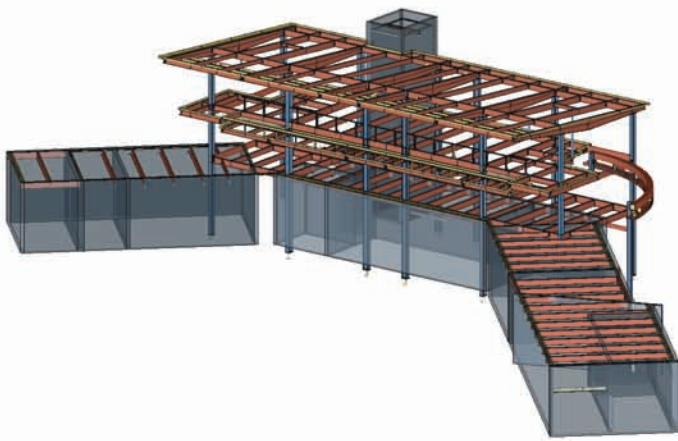
Our Projects



SOFTBALL STADIUM . MI

Project Name: Softball Stadium
Fabricator Name: ANJ industrial fabricating Hospital Project
Type: Industrial

Tonnage: 500T
Project Duration: 8 Months



Our Projects

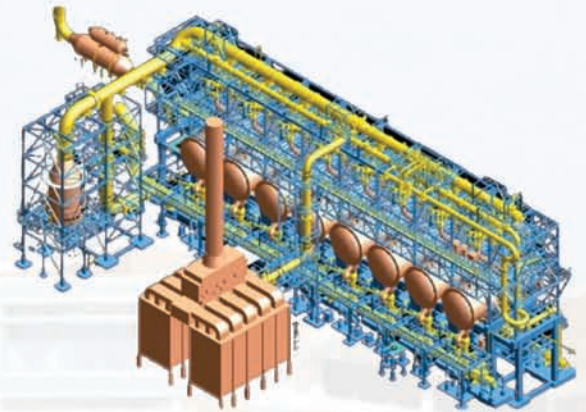
PETROCHEMICALS

COMPANY NAME : Tasnee Petrochemicals SAUDI ARABIA

PROJECT : Flexibility / Stress Analysis Study on Propane Dehydrogenation reactors Hydrocarbon header System

PROJECT TYPE : Stress Analysis

MAN HOURS : 2500

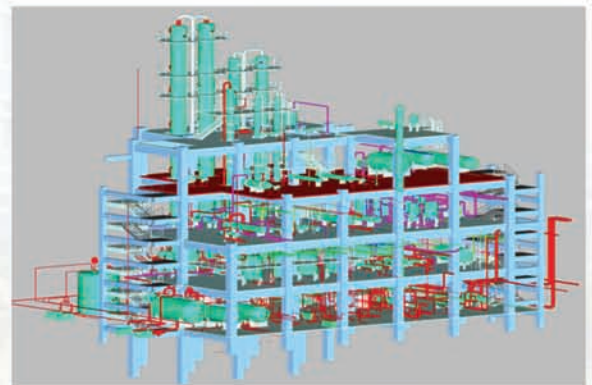


COMPANY NAME : Sree Rayalseema Alkalies & Allied Chemicals Ltd India.

PROJECT : Chloromethanes Plant

PROJECT TYPE : 3D modeling & Detail Engineering

MAN HOURS : 30000



COMPANY NAME : Well Known Polyester Plant.

PROJECT : X200 TPD Polyester Pant at Daman

PROJECT TYPE : Detail Engineering & 3D modeling on PDMS

MAN HOURS : 26000



Our Projects

WATER TREATMENT

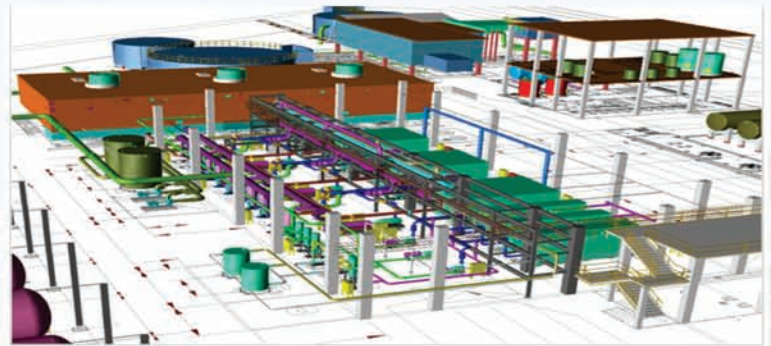
COMPANY NAME : M/s Ion Exchange Project & Engineering Ltd.

PROJECT : Detail Engineering

PROJECT TYPE : Detail Engineering of CPU & Regeneration system I.e Water treatment Plant.3D Modeling Piping System.

MAN HOURS : 1000

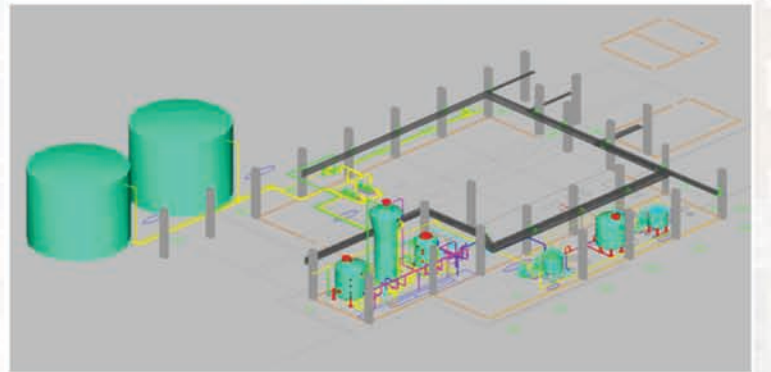
UNITS : 2 X 660 MW Chhabra Supercritical TPS Stage-II, Unit 5 & 6



COMPANY NAME : M/s Ion Exchange India Ltd.

PROJECT : DARLIPALI SUPER THERMAL POWER PROJECT

PROJECT TYPE : Detail Engineering of CPU & Regeneration system I.e Water treatment Plant.3D Modeling Piping System.

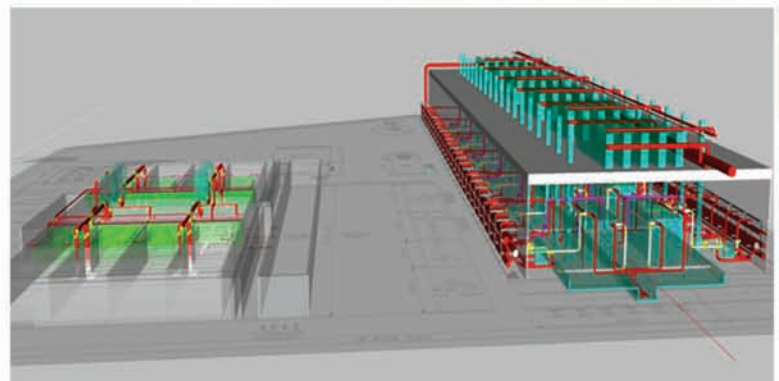


COMPANY NAME : M/s Ion Exchange India Ltd.

PROJECT : PT Cikarang Listrindo Coal Fired Power Station.

PROJECT TYPE : PT Cikarang Listrindo Coal Fired Power Station, Babelan Process Flow Diagram for Raw Water Treatment Plant.

MAN HOURS : 1500





Access Steel Tech

AN ITES Steel Structural Company

Nashik : # 2nd Floor , Guru Ashish , Opp. BSNL , Canada Corner , Nashik – 02. Tel : +91 98231 91442 Vonage : 8122205081

Mumbai : 1202, Mayeresh Chambers, Plot No.60, Sector 11, CBD Belapur - 400614 Navi Mumbai

Email: kothekar@accesssteeltech.com web : www.accesssteeltech.com